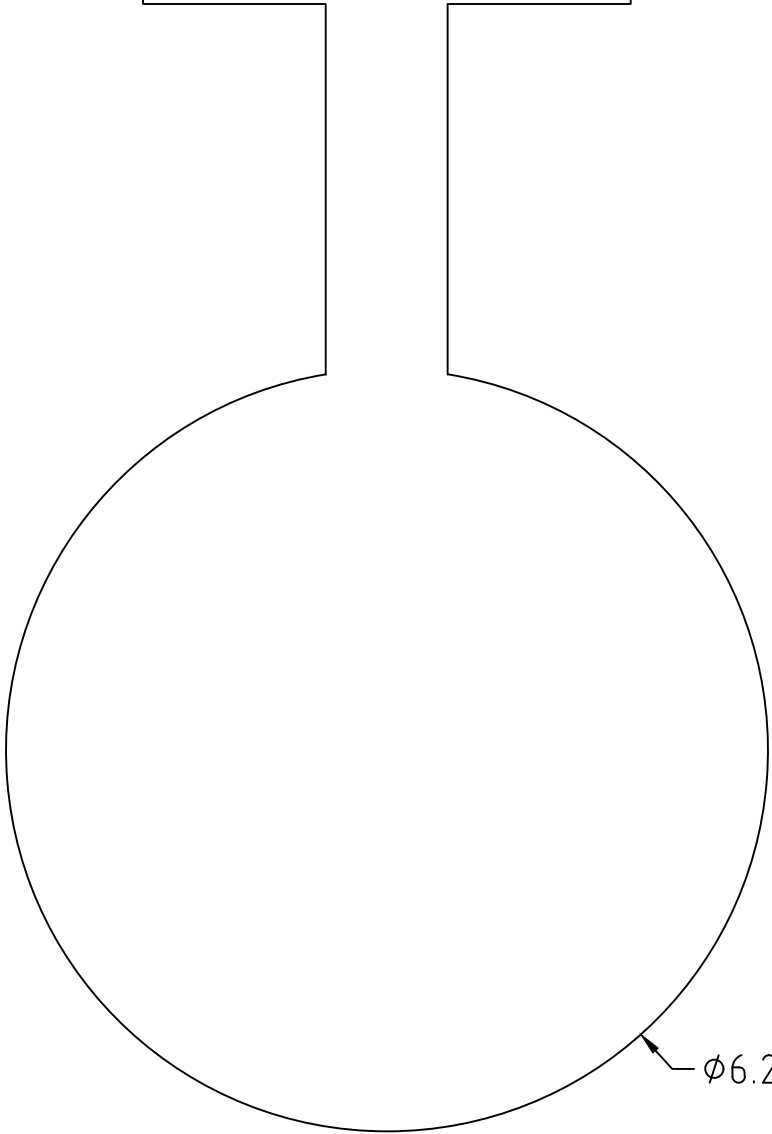
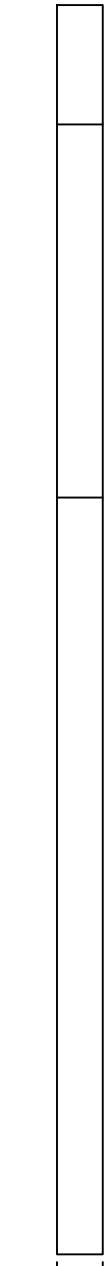


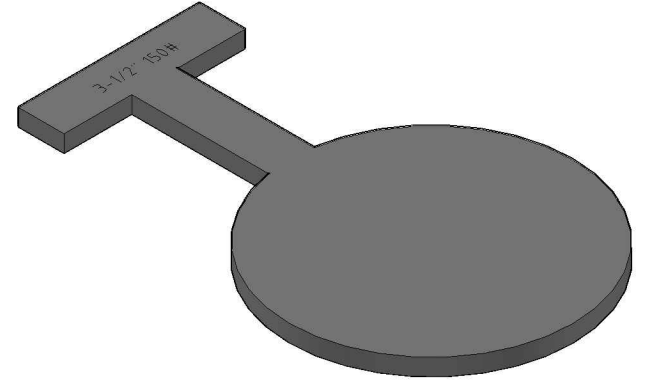
3-1/2" 150#



φ6.25



0.38



DIMENSIONS ASME B16.4.8  
FACING TOLERANCES ASME B16.5  
THICKNESS TOLERANCES (-ZERO +.12)



5500 TWIN CITY HWY.  
PORT ARTHUR, TX 77642  
(409) 736-7665  
[WWW.HYDROBLINDSOLUTIONS.COM](http://WWW.HYDROBLINDSOLUTIONS.COM)

TITLE: 3-1/2" CLASS 150 PADDLE BLIND T-HANDLE  
MATERIAL: A516-70 / 304L / 316L  
FINISH: MILL OR 125-250 AARH MACHINE  
WEIGHT: 5 LBS