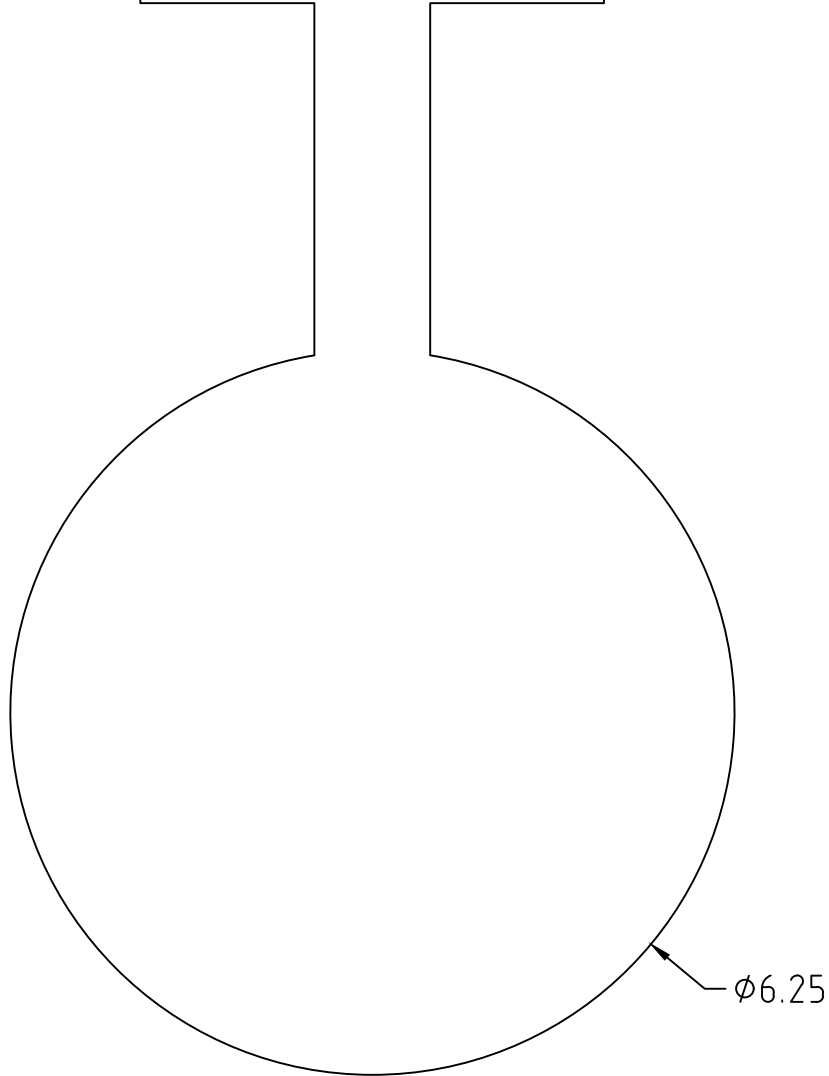


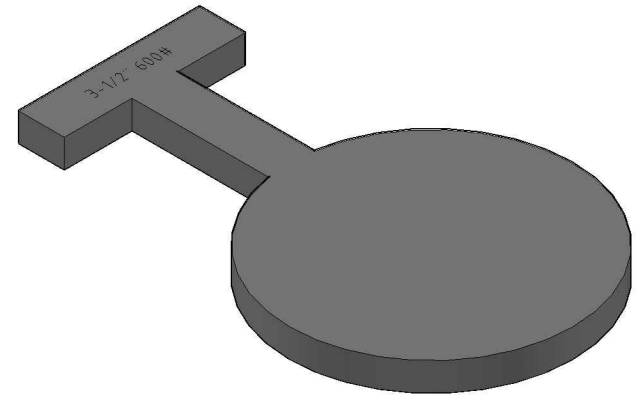
3-1/2" 600#



$\phi 6.25$



0.63



DIMENSIONS ASME B16.4.8  
FACING TOLERANCES ASME B16.5  
THICKNESS TOLERANCES (-ZERO +.12)

**HYDROBLIND**  
**SOLUTIONS**

5500 TWIN CITY HWY.  
PORT ARTHUR, TX 77642  
(409) 736-7665

[WWW.HYDROBLINDSOLUTIONS.COM](http://WWW.HYDROBLINDSOLUTIONS.COM)

TITLE: 3-1/2" CLASS 600 PADDLE BLIND T-HANDLE

MATERIAL: A516-70 / 304L / 316L

FINISH: MILL OR 125-250 AARH MACHINE

WEIGHT: 9 LBS